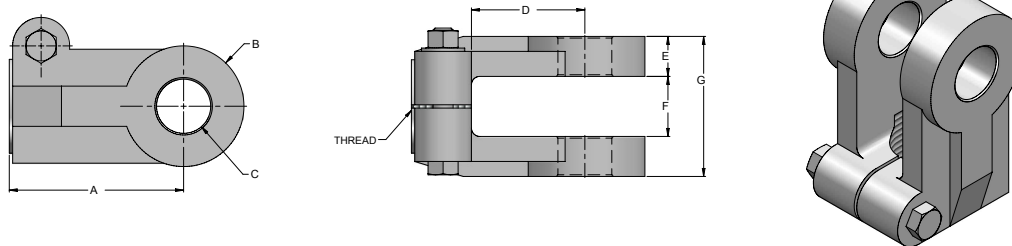


FEMALE CLEVIS								
PART NUMBER	A	B	C	D	E	F	G	MAXIMUM LOAD PUSH / PULL (LBS)
CL-100075-CLP	1.50"	0.76"	1.75"	1.37"	0.87"	0.37"	1.62"	5300
CL-125100-CLP	2.00"	1.01"	2.62"	2.12"	1.12"	0.50"	2.12"	22500
CL-175100-CLP	2.00"	1.01"	2.62"	2.12"	1.12"	0.62"	2.37"	28100
CL-200100-CLP	2.00"	1.01"	2.62"	2.00"	1.12"	0.62"	2.37"	28100
CL-250150-CLP	3.00"	1.51"	3.00"	2.25"	1.62"	0.75"	3.12"	50600

MATERIAL : C1045 CAST STEEL

MAXIMUM PUSHING & PULLING FORCE ARE BASED ON A SUGGESTED MINIMUM SAFETY FACTOR OF 2

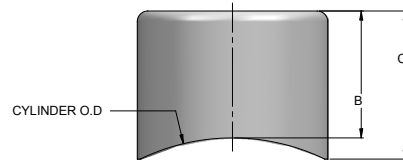
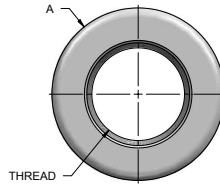
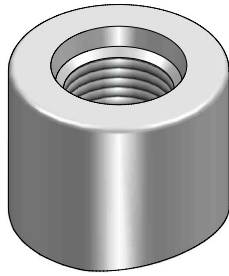


ADJUSTABLE CLEVIS									
PART NUMBER	THREAD	A	B	C	D	E	F	G	MAXIMUM LOAD PUSH / PULL (LBS)
ST-0870718-CVP	0.875-14 UNF	2.75"	1.87"	0.76"	1.62"	0.56"	0.87"	2.00"	5300
ST-1121020-CVP	1.125-12 UNF	3.25"	2.00"	1.01"	2.12"	0.75"	1.12"	2.62"	23000
ST-1121022-CVP	1.125-12 UNF	3.25"	2.25"	1.01"	2.12"	0.75"	1.12"	2.62"	23000
ST-1121222-CVP	1.125-12 UNF	3.25"	2.25"	1.26"	2.12"	0.75"	1.12"	2.62"	23000
ST-1251022-CVP	1.250-12 UNF	3.25"	2.25"	1.01"	2.12"	0.75"	1.12"	2.62"	23000
ST-1311025-CVP	1.312-12 UN	3.25"	2.50"	1.01"	2.12"	0.81"	1.12"	2.75"	33700
ST-1311225-CVP	1.312-12 UN	3.25"	2.50"	1.26"	2.12"	0.81"	1.12"	2.75"	33700
ST-1501025-CVP	1.500-12 UNF	3.25"	2.50"	1.01"	2.12"	0.81"	1.12"	2.75"	33700
ST-1501225-CVP	1.500-12 UNF	3.25"	2.50"	1.26"	2.12"	0.81"	1.12"	2.75"	33700
ST-1501226-CVP	1.500-12 UNF	3.62"	2.75"	1.26"	2.12"	1.06"	1.18"	3.31"	58900

MATERIAL : C1045 CAST STEEL / DUCTILE IRON

MAXIMUM PUSHING & PULLING FORCE ARE BASED ON A SUGGESTED MINIMUM SAFETY FACTOR OF 2

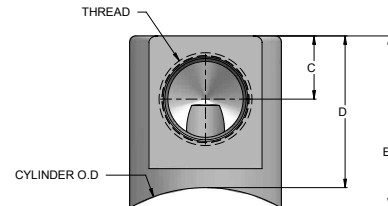
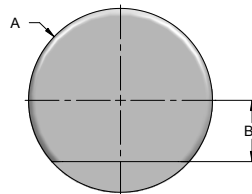
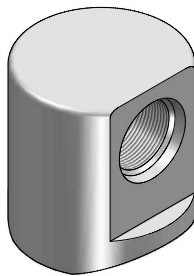
HYDRO CUSTOM IS NOT RESPONSIBLE FOR INCORRECT RESULTS OBTAINED WITH FIGURES IN THIS DOCUMENT. INFORMATION IS FOR REFERENCE ONLY. NO OTHER CONDITIONS ARE EXPRESSED OR IMPLIED.



PORT NPT					
PART NUMBER	CYLINDER O.D	THREAD	A	B	C
025N-200062-POP	2.00"	1/4 NPT	0.87"	0.62"	0.68"
037N-250075-POP	2.50"	3/8 NPT	1.12"	0.75"	0.87"
050N-300087-POP	3.00"	1/2 NPT	1.25"	0.87"	0.93"
050N-350087-POP	3.50"	1/2 NPT	1.25"	0.87"	0.93"
050N-400087-POP	4.00"	1/2 NPT	1.25"	0.87"	0.93"
050N-450087-POP	4.50"	1/2 NPT	1.25"	0.87"	0.93"
075N-550100-POP	5.50"	3/4 NPT	1.37"	1.00"	1.06"

PORT SAE					
PART NUMBER	CYLINDER O.D	THREAD	A	B	C
04S-200062-POP	2.00"	SAE 4	0.75"	0.62"	0.68"
06S-250075-POP	2.50"	SAE 6	1.00"	0.75"	0.81"
08S-300093-POP	3.00"	SAE 8	1.12"	0.93"	1.00"
08S-350093-POP	3.50"	SAE 8	1.12"	0.93"	1.00"
08S-400093-POP	4.00"	SAE 8	1.12"	0.93"	1.00"
08S-450093-POP	4.50"	SAE 8	1.12"	0.93"	1.00"
12S-550100-POP	5.50"	SAE 12	1.50"	1.00"	1.06"

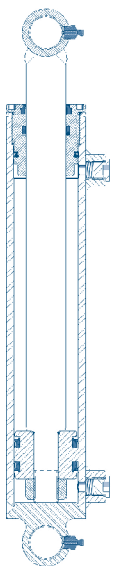
MATERIAL : C1020 STEEL  
 MAXIMUM OPERATING PRESSURE : 3000 psi (SAFETY FACTOR = 2)

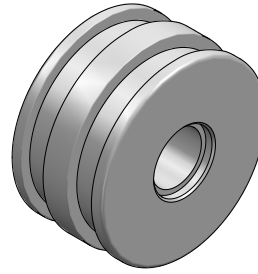
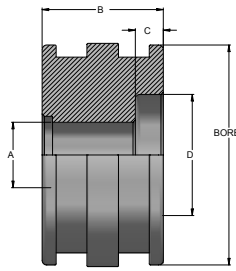


PORT								
PART NUMBER	CYLINDER O.D	THREAD	A	B	C	D	E	
025N-200112-90POP	2.00"	1/4 NPT	1.12"	0.37"	0.43"	1.12"	1.25"	
037N-250125-90POP	2.50"	3/8 NPT	1.25"	0.43"	0.50"	1.25"	1.37"	
050N-300150-90POP	3.00"	1/2 NPT	1.62"	0.50"	0.62"	1.50"	1.68"	
050N-350150-90POP	3.50"	1/2 NPT	1.62"	0.50"	0.62"	1.50"	1.62"	
050N-400150-90POP	4.00"	1/2 NPT	1.62"	0.50"	0.62"	1.50"	1.62"	
050N-450150-90POP	4.50"	1/2 NPT	1.62"	0.50"	0.62"	1.50"	1.62"	
075N-550200-90POP	5.50"	3/4 NPT	2.12"	0.62"	0.87"	2.00"	2.18"	
04S-200112-90POP	2.00"	SAE 4	1.12"	0.37"	0.43"	1.12"	1.25"	
06S-250125-90POP	2.50"	SAE 6	1.25"	0.43"	0.50"	1.25"	1.37"	
08S-300150-90POP	3.00"	SAE 8	1.62"	0.50"	0.62"	1.50"	1.68"	
08S-350150-90POP	3.50"	SAE 8	1.62"	0.50"	0.62"	1.50"	1.62"	
08S-400150-90POP	4.00"	SAE 8	1.62"	0.50"	0.62"	1.50"	1.62"	
08S-450150-90POP	4.50"	SAE 8	1.62"	0.50"	0.62"	1.50"	1.62"	
12S-550200-90POP	5.50"	SAE 12	2.12"	0.62"	0.81"	2.00"	2.18"	

MATERIAL : C1020 STEEL  
 MAXIMUM OPERATING PRESSURE : 3000 psi (SAFETY FACTOR = 2)

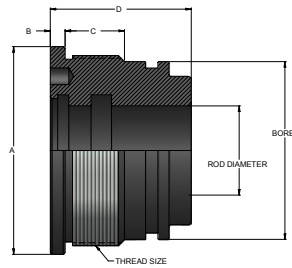
HYDRO CUSTOM IS NOT RESPONSIBLE FOR INCORRECT RESULTS OBTAINED WITH FIGURES IN THIS DOCUMENT. INFORMATION IS FOR REFERENCE ONLY. NO OTHER CONDITIONS ARE EXPRESSED OR IMPLIED.





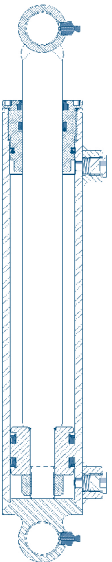
PISTON						
PART NUMBER	BORE	ROD DIAMETER	A	B	C	D
ST-15062-PIP	1.50"	1.00"	0.62"	1.50"	NONE	NONE
ST-20075-PIP	2.00"	1.25"	0.75"	1.50"	NONE	NONE
ST-25087-PIP	2.50"	1.50"	0.87"	1.62"	0.37"	1.62"
ST-30087-PIP	3.00"	1.50"	0.87"	1.62"	0.37"	1.62"
ST-35100-PIP	3.50"	1.75"	1.00"	1.62"	0.43"	1.87"
ST-40125-PIP	4.00"	2.00"	1.25"	1.75"	0.68"	2.62"
ST-50150-PIP	5.00"	2.50"	1.50"	2.50"	0.62"	3.25"
ST-60200-PIP	6.00"	3.00"	2.00"	2.50"	0.62"	3.62"

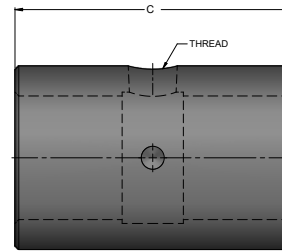
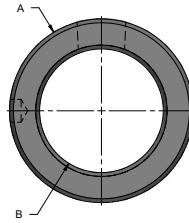
MATERIAL : 65-45-12 DUCTILE CAST IRON  
 PISTON FOR 5" & 6" BORE COME WITH A WEAR RING GROOVE



GLAND							
PART NUMBER	BORE	ROD DIAMETER	THREAD SIZE	A	B	C	D
ST-15100-GLP	1.50"	1.00"	1.700-12 UN	2.00"	0.25"	0.75"	2.00"
ST-20125-GLP	2.00"	1.25"	2.200-12 UN	2.50"	0.25"	0.87"	2.25"
ST-25150-GLP	2.50"	1.50"	2.700-12 UN	3.00"	0.25"	1.00"	2.37"
ST-30150-GLP	3.00"	1.50"	3.200-12 UN	3.50"	0.25"	1.00"	2.37"
ST-35175-GLP	3.50"	1.75"	3.700-12 UN	4.00"	0.25"	1.00"	2.37"
ST-40200-GLP	4.00"	2.00"	4.200-12 UN	4.50"	0.25"	1.00"	2.37"
ST-50250-GLP	5.00"	2.50"	5.200-12 UN	5.50"	0.31"	1.37"	3.00"
ST-60300-GLP	6.00"	3.00"	6.250-12 UN	6.75"	0.50"	1.56"	3.50"

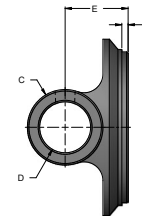
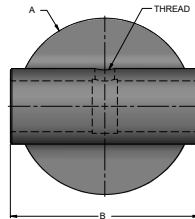
MATERIAL : 65-45-12 DUCTILE CAST IRON  
 GLAND FOR 5" & 6" BORE COMES WITH A WEAR RING GROOVE





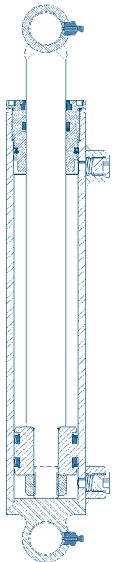
BUSHING						
PART NUMBER	A	B	C	THREAD	MAXIMUM PUSH (LBS)	MAXIMUM PULL (LBS)
BU-075200-BUP	1.25"	0.76"	2.00"	1/8 NPT	5300	5300
BU-100225-BUP	1.50"	1.01"	2.25"	1/8 NPT	21200	21200
BU-125225-BUP	2.00"	1.26"	2.25"	1/8 NPT	29000	29000
BU-150250-BUP	2.25"	1.51"	2.50"	1/8 NPT	37700	37700
BU-200325-BUP*	3.00"	*2.01"	3.25"	1/8 NPT	59000	50000

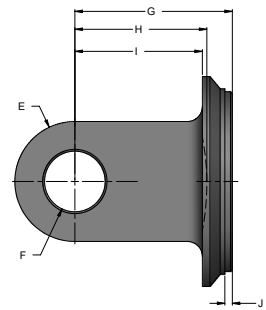
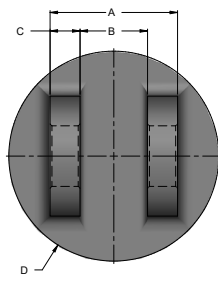
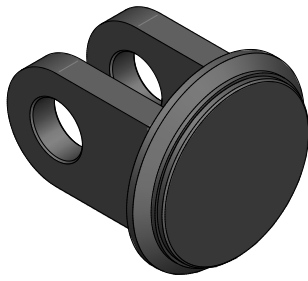
\* COME WITH A SLEEVE TO PASS FROM 2" TO 1 3/4" PIN DIAMETER  
 MAXIMUM PUSHING / PULLING FORCE ARE BASED ON A SUGGESTED MINIMUM SAFETY FACTOR OF 2  
 MATERIAL : C1020 STEEL



END CAP BUSHING										
PART NUMBER	BORE	THREAD	A	B	C	D	E	F	MAXIMUM PUSH (LBS)	MAXIMUM PULL (LBS)
BU-15075-CAP	1.50"	1/8 NPT	2.00"	2.25"	1.25"	0.76"	1.12"	0.12"	5300	5300
BU-20100-CAP	2.00"	1/8 NPT	2.50"	2.75"	1.50"	1.01"	1.25"	0.12"	9500	9500
BU-25100-CAP	2.50"	1/8 NPT	3.00"	3.25"	1.50"	1.01"	1.25"	0.12"	14700	14700
BU-30100-CAP	3.00"	1/8 NPT	3.50"	3.75"	1.50"	1.01"	1.25"	0.12"	21200	21200
BU-35125-CAP	3.50"	1/8 NPT	4.00"	4.25"	2.00"	1.26"	1.50"	0.12"	29000	29000
BU-40150-CAP	4.00"	1/8 NPT	4.50"	4.75"	2.25"	1.51"	1.62"	0.12"	37700	37700
BU-50200-CAP*	5.00"	1/8 NPT	5.50"	5.75"	3.00"	2.01"	2.25"	0.25"	59000	50000

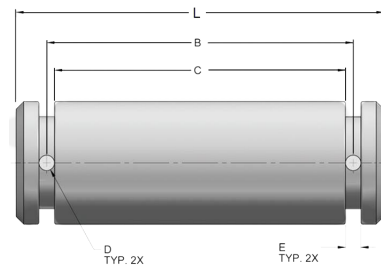
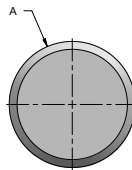
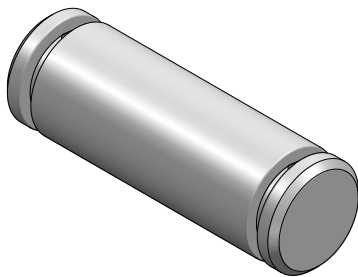
\* COME WITH A SLEEVE TO PASS FROM 2" TO 1 3/4" PIN DIAMETER  
 MAXIMUM PUSHING / PULLING FORCE ARE BASED ON A SUGGESTED MINIMUM SAFETY FACTOR OF 2  
 MATERIAL : C1045 CAST STEEL





END CAP CLEVIS													
PART NUMBER	BORE	A	B	C	D	E	F	G	H	I	J	MAXIMUM PUSH (LBS)	MAXIMUM PULL (LBS)
CL-15075-CAP	1.50"	1.62"	0.87"	0.37"	2.00"	1.50"	0.76"	1.87"	none	1.37"	0.12"	5300	5300
CL-20100-CAP	2.00"	2.12"	1.12"	0.50"	2.50"	2.00"	1.01"	2.62"	none	2.12"	0.12"	9500	9500
CL-25100-CAP	2.50"	2.12"	1.12"	0.50"	3.00"	2.00"	1.01"	2.62"	none	2.12"	0.12"	14750	14700
CL-30100-CAP	3.00"	2.12"	1.12"	0.50"	3.50"	2.00"	1.01"	2.62"	none	2.12"	0.12"	22500	22500
CL-35100-CAP	3.50"	2.37"	1.12"	0.62"	4.00"	2.00"	1.01"	2.62"	2.12"	2.00"	0.12"	28100	28100
CL-40100-CAP	4.00"	2.37"	1.12"	0.62"	4.50"	2.00"	1.01"	2.50"	2.00"	1.75"	0.12"	28100	28100
CL-50150-CAP	5.00"	3.12"	1.62"	0.75"	5.50"	3.00"	1.51"	3.12"	none	2.25"	0.25"	50600	50600

MATERIAL : C1045 CAST STEEL  
 MAXIMUM PUSHING / PULLING FORCE ARE BASED ON A SUGGESTED MINIMUM SAFETY FACTOR OF 2



PIN							
PART NO	A	B	C	D & E	L	MAXIMUM LOAD (LBS)	FOR MODEL
075175-PNP	0.750"	1.87"	1.75"	0.12"	2.38"	15700	CL15, TCL15 CAP
075212-PNP	0.750"	2.25"	2.12"	0.12"	2.62"	15700	TCL15 FRONT CLEVIS
100237-PNP	1.000"	2.50"	2.37"	0.12"	3.00"	28100	CL20, CL25, CL30
100262-PNP	1.000"	2.75"	2.62"	0.12"	3.25"	28100	CL35, CL40
100275-PNP	1.000"	2.87"	2.75"	0.12"	3.28"	28100	TR2.5, TR3-20/25/30
100287-PNP	1.000"	3.00"	2.87"	0.12"	3.63"	28100	TCL, TR3-35/40
125350-PNP	1.250"	3.62"	3.50"	0.12"	4.12"	50500	TRxx-xx16-ASAE, TR3-50
150337-PNP	1.500"	3.56"	3.37"	0.18"	4.12"	63100	CL50

MATERIAL : C1045 STEEL ZINC PLATED  
 MAXIMUM PUSHING / PULLING FORCE ARE BASED ON A SUGGESTED MINIMUM SAFETY FACTOR OF 2

HYDRO CUSTOM IS NOT RESPONSIBLE FOR INCORRECT RESULTS OBTAINED WITH FIGURES IN THIS DOCUMENT. INFORMATION IS FOR REFERENCE ONLY. NO OTHER CONDITIONS ARE EXPRESSED OR IMPLIED.